



RIPPA GROUP

WHEEL LOADER RL06



SUPERIOR PERFORMANCE

Impressive power, excellent versatility, and a compact frame add up to superior performance for a wide range of jobs.

Powerful engine

Equipped with Kubota's powerful D1105 engine, it has an output of up to 24.75 horsepower. This engine is not only powerful, but also quiet, stable and reliable. Whether it is accelerating, pushing or climbing, it can show excellent performance, helping you to easily cope with various challenges.

Versatility

The RL06's compact body lets you get into tight places that bigger loaders can't. The compact size also means less risk of damage to both surroundings and the RL06 itself. The RL06 can even be used with a variety of attachments, including a bucket, pallet fork, grapple, and snow blade. With an RL06 on the job, you'll soon make short work of a wide range of construction, industrial, and agricultural tasks.

Front and rear frames

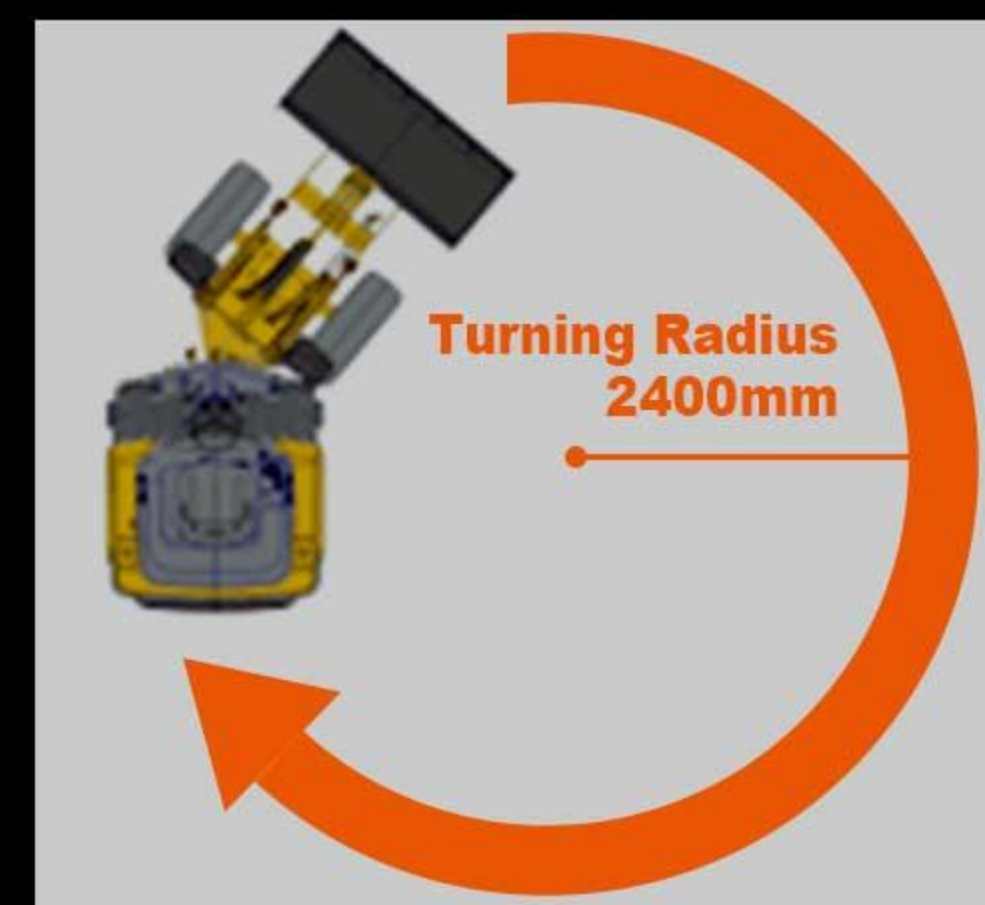
The front and rear frames are hinged with heavy tie rod ball joints, which has strong bearing capacity and is more smooth when turning and twisting.

Outstanding stability

The RL06's long wheelbase provides outstanding stability, letting you work with ease and confidence under a variety of terrain conditions.

Turning radius track circle

Excellent turning performance lets you work easily and confidently even in tight or narrow work areas.



Working range

With the RL06's long dumping reach and high dumping clearance, all types of dumping jobs are now literally within reach, from quickly dumping into truck beds to efficiently performing pallet fork operations.

Load sensing transmission

As load conditions change, so do the RL06's speed and torque, automatically shifting from high speed/low torque to low speed/high torque. A touch of a button reduces the maximum travel speed while maintaining full auxiliary hydraulic power.



Air-conditioned cab (Option)

The air-conditioned cab can effectively regulate the temperature, providing a comfortable working environment for operators, reducing fatigue and improving work efficiency, whether in hot summer or cold winter.



COMFORTABLE CAB

Small in size, the RL06 is big in comfort, offering a deluxe cab with air conditioning and heater to keep you working comfortably and efficiently all day long in every season.

Stress-free work station

Comfort is the key to operator efficiency. That's why the RL06 offers a supremely comfortable cab for the operator. From the wide entry and ample leg room to the fully adjustable suspension seat, every detail is designed to reduce stress and fatigue and enhance comfort and operability. The 360° view out the front, sides, and rear lessen the risk of damage in tight work areas, further reducing operator stress. The cab is mounted on rubber pads to minimize sounds and vibrations and maximize ease and comfort.

Air conditioning (optional for cab models)

A complete climate control system with air conditioner/heater and vent system for optimized airflow ensure ideal operator comfort throughout the year.



Wipers(Cab type)

It can clear water droplets and snow on the windshield in time to ensure the driver has a clear view.



Centralized multi-function button design

The buttons for common functions such as headlights, turn signals, and horns are centrally arranged to facilitate operators to quickly find and use them, thereby improving work efficiency, reducing the risk of misoperation, and improving overall operation safety.



Suspension seat

Operators come in all sizes and shapes. That's why the RL06 is equipped with a suspension seat that lets each operator find the optimum level of hip support, seat-back reclining angle, and seat position. Safety is always important, so the seat is equipped with a retractable seat belt.



Multi-function steering wheel

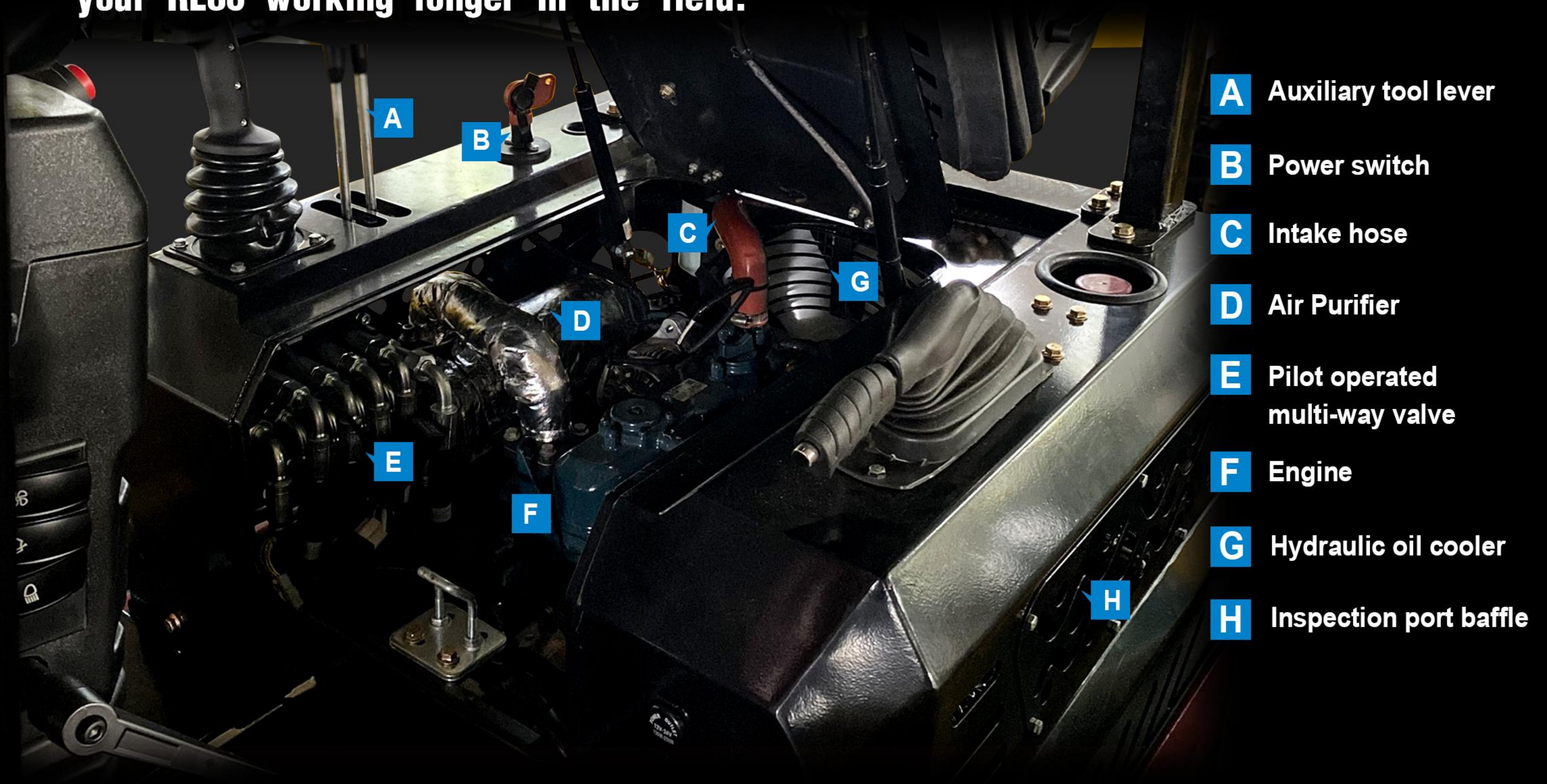
Multi-function steering wheel with centralized functions and convenient operation. Hydraulic steering with priority valve for better steering at low pressure. And there is instrument display, the data is more detailed, it is convenient to understand the parameters of the machine.



- | | | | |
|----------|-------------------------|----------|-------------------|
| A | Headlight knob | E | Safety guardrail |
| B | Starter key | F | Seat belt |
| C | Handbrake | G | Warning light |
| D | Multi-function joystick | H | Fire extinguisher |

MAINTENANCE

Quick and easy access to key maintenance points keeps your RL06 working longer in the field.



Easy maintenance

The RL06 provides quick and convenient access to all key maintenance points, reducing downtime and maintenance costs. The engine bonnet at the rear opens wide to provide access to all the main service areas.

Instrument Display

The oil level and temperature of the machine can be observed at all times, and the operating status of the machine can be displayed



Fuel level indication buzzer

When refueling, a buzzer sounds to prevent overfilling and the potential hazards from fuel spills.

Automatic parking brake

When the engine is turned off, the parking brake automatically engages as a convenience to prevent the RL06 from moving.

work lights

Bright work lights allow operations at night and in poor lighting.

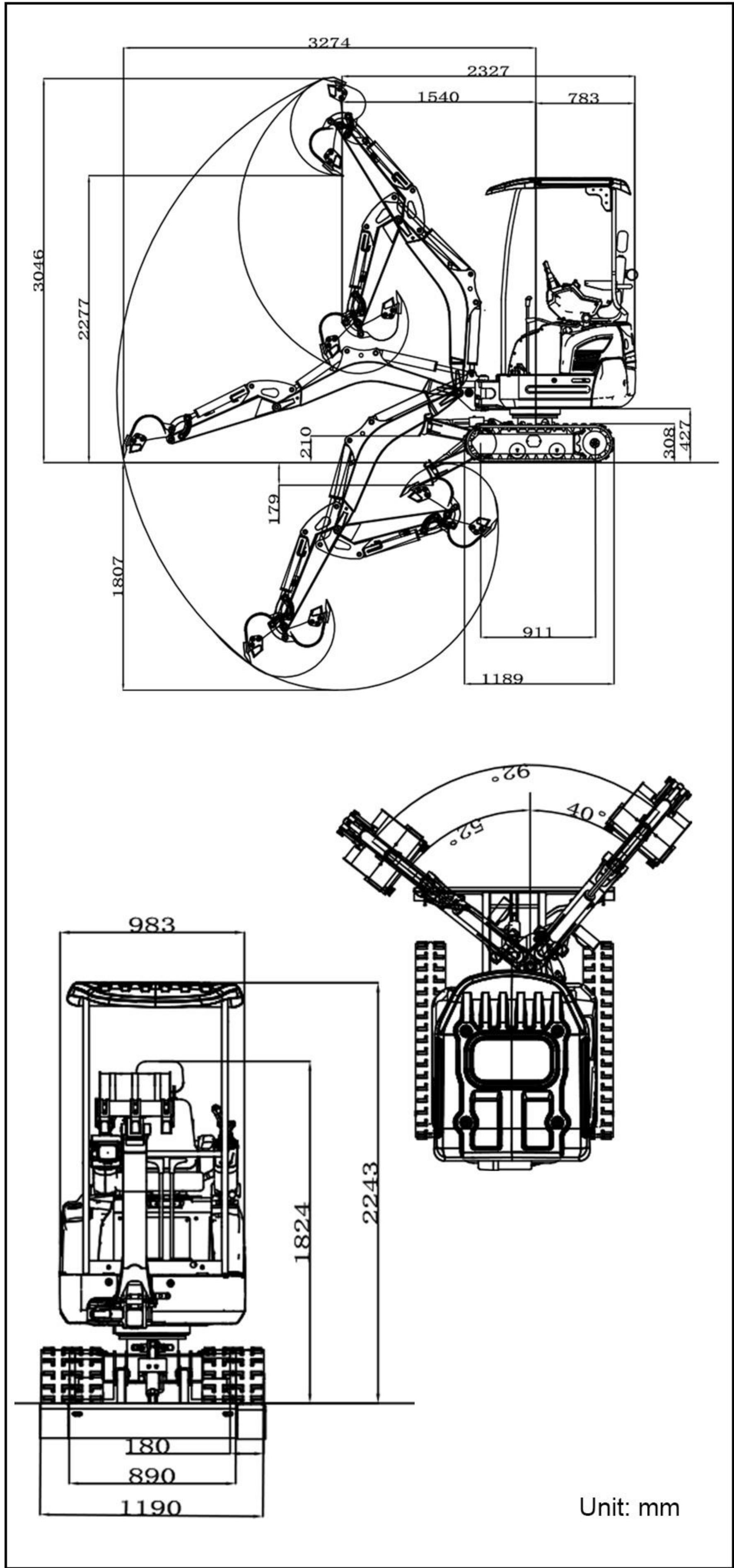
Power switch

When the machine is idle, you can turn off the power switch. By cutting off the power supply, you can avoid unnecessary power consumption and effectively protect the power in the battery.

Air cleaner

Through the purification device, the emission of harmful substances in the exhaust gas, such as carbon monoxide, nitrogen oxides and particulate matter, is effectively reduced, reducing the pollution to the air quality

■ SCOPE OF WORK



■ SPECIFICATION

Model		Unit	RL06
Basic parameters	Machine working weight (kg)	lb(kg)	3795 (1725)
	Bucket capacity (m³)	ft³(m³)	8.1 (0.23)
	Rated load mass (kg) (safe load)	lb(kg)	660 (300)
	Maximum load mass (kg)	lb(kg)	1320 (600)
	Travel speed low/high speed (Km/h)	mph(km/h)	0-5 (0-8)
	Gradability (%)	(%)	25%
	Ground pressure (Kpa)	psf(kpa)	1540 (73.72)
	Maximum unloading height (mm)	in(mm)	81.1 (2060)
	Maximum loading height (mm)	in(mm)	133.1 (3380)
	Maximum unloading distance (mm)	in(mm)	25.6 (650)
	Turning radius (mm)	in(mm)	94.5 (2400)
	Wheel base/wheelbase (mm)	in(mm)	33/49 (840/1250)
	Minimum ground clearance (mm)	in(mm)	6.1 (155)
Engine	Engine brand		Kubota
	Engine model		D1105
	Maximum horsepower	ps(hp)	25 (24.7)
	Maximum power	kw	18.4
	Maximum speed	rpm	3000
	Displacement	gal(L)	0.3 (1.123)
	Number of cylinders		3
	Cooling method		Water-cooled
	Engine oil change amount	gal(L)	1.1 (4)
	Fuel form		Diesel
	Fuel grade		0/-10
	Theoretical fuel consumption	(L/h)	1.3-1.5
Body	Transport length - with bucket	in(mm)	143.7 (3650)
	Transport length - without bucket	in(mm)	122.8 (3120)
	Transport width	in(mm)	45.3 (1150)
	Transport height	in(mm)	90.6 (2300)
	Bucket width	in(mm)	45.3 (1150)
tank	Fuel tank (L)	gal(L)	4 (15)
	Hydraulic oil tank (L)	gal(L)	7.4 (28)

■ HYDRAULIC SYSTEM

Travel pump type/model	Closed plunger pump V40D32E1M	Multi-way valve	Quadruple multi-way valve
Travel pump brand	Hengli	Rated set pressure (Mpa)	18MPa
Travel pump maximum flow rate (L/min)	96	Maximum set pressure (Mpa)	20MPa
Working pump type/model	Gear pump PGP5114GLP	Travel hydraulic motor type	Deston BM5-315
Working pump brand	Tianjin Walking	Travel motor brand	Deston
Working pump maximum flow rate (L/min)	42	Motor displacement	315

- Please read the instruction manual carefully and use the machine correctly.
- Always wear a seat belt when working. (ROPS specifications only)
- If you are operating construction machinery with a machine mass of less than 3 tons, you must take the "Special Training for Vehicle-Mounted Construction Machinery Operation" course beforehand. If the machine mass is 3 tons or more, you must take the "Vehicle-Mounted Construction Machinery Operation Skills Course".
- To prevent breakdowns and accidents, be sure to inspect the machinery regularly.
- Specific voluntary inspections are required to be carried out by an inspection company registered with the Minister of Health, Labor and Welfare or the Director-General of the Labor Standards Inspection Bureau.

WE ARE RIPPA

Shandong Rippa Machinery Group Co., Ltd. is located in the sixth industrial park of Jining High-tech Zone, Shandong Province. It is a state-owned high-tech enterprise with import and export rights.

The company's employees are energetic and enterprising, constantly creating the legend and fame of the rippa!



Shandong Rippa Machinery Group Co., Ltd.

Address: No. 6 Industrial Park, 2166 Chongwen Avenue, Gaoxin District, Jining City, Shandong Province

Some specifications are based on engineering measurements and may differ from actual conditions. Specifications are for comparison purposes only and are subject to change without notice. Specifications of individual Rippa devices may vary due to normal variations in design, manufacturing, operating conditions and other factors. Some images of Rippa devices are not limited to standard packages.



www.rippa.com